



WAIKĪKĪ IMPROVEMENT ASSOCIATION

Wikiwiki Wire

E-newsletter keeping you up-to-date on Waikīkī news, features, trends and more!



Contents

3

WAIKĪKĪ IMPROVEMENT ASSOCIATION SPONSORS THE 2022 NEW YEAR'S FIREWORKS

5

THE WBSIDA PARTNERS WITH THE CITY AND COUNTY OF HONOLULU FOR A VOLUNTEER-LED BEACH CLEAN-UP IN WAIKĪKĪ

7

THE WTMA IS WORKING WITH CITY DEPARTMENTS GET YOUR 2022 PERMITS FOR LOADING ZONE USE IN WAIKĪKĪ!

MORE WAIKĪKĪ NEWS, EVENTS & FOOD

HALEKULANI WELCOMING 2022 FROM OUR "HOUSE BEFITTING HEAVEN" TO YOURS!

HALEPUNA: WELCOMING 2022 FROM OUR "HOUSE OF WELCOMING WATERS" TO YOURS

HAWAI'I CONVENTION CENTER TO FULLY REOPEN EXHIBIT HALLS AFTER HOSTING AGENCIES SERVING OUR COMMUNITY DURING THE PANDEMIC

THE WAIKIKI FARMERS MARKET OPEN EVERY MONDAY & WEDNESDAY

WEEKLY LIVE MUSIC AT SHOR

IL LUPINO: BUON ANNO A TUTTI!

WAIKIKI BEACH WALK OPEN MARKET RETURNS ON MONDAYS

LILIHA BAKERY OPEN NOW

ROYAL HAWAIIAN CENTER ROARS INTO THE NEW YEAR!

TEX808 BBQ & BREWS: 2 DAILY HAPPY HOURS

THE WAIKIKI SHOPPING PLAZA DINING

WOLFGANG'S: MAHALO NUI LOA & HAU'OLI MAKAHIKI HOU!

Waikiki Improvement Association Sponsors the 2022 New Year's Fireworks

The Waikiki Improvement Association welcomed 2022 with a bang! The members sponsored a New Year's fireworks display produced by Grucci for the 15th year, broken only by the Covid year 2020. The Waikiki Improvement Association decided to bring back the popular fireworks event to signal the beginning of recovery from the pandemic paralysis of 2020-21. The action was only possible with the financial support of many of the Waikiki establishments. Rainy weather and the omicron spike in covid numbers threatened the program, but with the support of the City and no objections from the State the show went on. A dramatic break in the weather provided a clear view of the spectacular display.

The following is a synopsis of the 2022 show:

The Opening - The opening begins with a flurry of color and thunder, filling the sky to a height of three hundred feet. Simultaneously a second level of specialty shells will be launched to create special effects rising above the barrage of color and thunder. On top of it all, large bursting chrysanthemums will cover the entire sky up to twelve hundred feet, creating a kaleidoscope of color and beat.

2022 New Year's Sponsors

Halekulani Hotel

Kyo-ya Management Co

Hilton Hawaiian Village

Outrigger Enterprises Inc.

Hyatt Regency Waikiki Resort & Spa

Waikiki Beach Marriott Resort & Spa

Hale Koa Hotel

Alohilani Resort Waikiki Beach

International Market Place

Royal Hawaiian Center

ABC Stores

The Feature Presentation - The body of the program will exhibit the finest assortment of domestic and international fireworks. As the segments unfold, each brings an array of different effects displayed in a glorious style of multiple firings. All of these brilliant colors and special effects are used to reflect the mood and theme of the show. The main act concludes with a display of beautiful and powerful scenes featuring the Grucci Gold Split Comet. Numerous shells are fired simultaneously, splitting and blazing as an arch across the night sky, leaving behind a sparking trail that creates a Golden Milky Way effect.

Grand Finale - From start to finish the Grand Finale provides a continuous lift and bombardment of light and sound, which is always rhythmically robust. Launched into the sky are the red, white and blue star shells to begin the color saturation; then peonies and chrysanthemums shells burst open one level higher; thousands of flashing sateen shells are then shot up to set stage for the peak. The heavy barrage of sound begins with our main trumpeters that quicken the tempo and rattle the sky at a stunning pace. All this is capped with a starry umbrella of Golden Kamaru shells.

Prince Waikiki

Waikiki Shopping Plaza

Queen Emma Land Co

Hilton Waikiki Beach Hotel

Kamehameha Schools

Luxury Row/2100 Kalākaua

First Hawaiian Bank - Waikiki

Trump International Hotel

Hilton Garden Inn

Hyatt Place Waikīkī Beach

Springboard Hospitality

Steiner Family LTD

The Modern Honolulu

Duke's Waikīkī

Central Pacific Bank - Waikiki

Ambassador Hotel

Paradise Cruises

Park Shore

Ritz Carlton Residences

Robertson Properties

The Laylow Hotel

Tiki's Grill & Bar

Kaimana Beach Hotel

Queen Kapi'olani Hotel

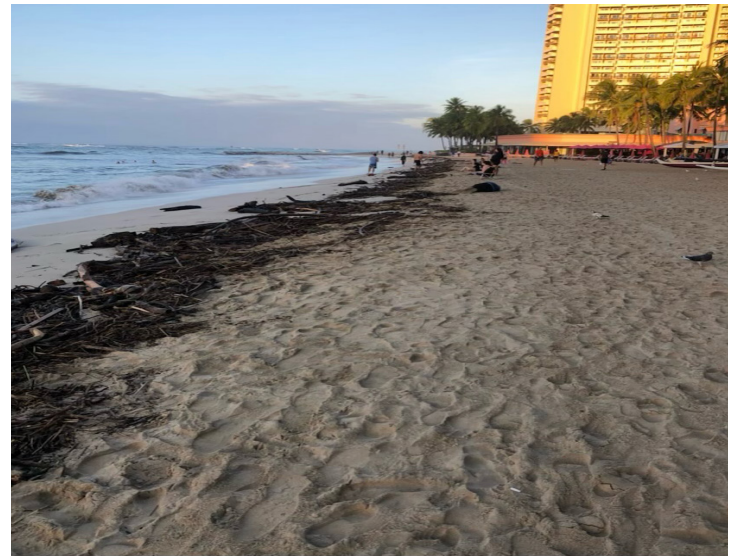
Pearl Waikīkī Hotel

THE WBSIDA PARTNERS WITH THE CITY AND COUNTY OF HONOLULU FOR A Volunteer-Led Beach Clean-up in Waikīkī

The Waikīkī Beach Special Improvement District Association (WBSIDA) would like to recognize the City and County of Honolulu (City) staff which participated in a volunteer clean-up of Waikīkī Beach on Saturday, December 11, 2021. The clean-up was necessary due to extreme rainfall on December 5 and 6th, 2021 which resulted in a large amount of debris coming out of the Ala Wai canal and ending up on Waikīkī Beach due to the strong onshore winds associated with the Kona low storm event which



THE WBSIDA PARTNERS WITH THE CITY & COUNTY OF HONOLULU
FOR A VOLUNTEER-LED BEACH CLEAN-UP IN WAIKIKI



produced the event. Volunteer efforts to clean man-made trash along Waikī Beach and Magic Island were lead by 4 Oceans and Sustainable Coastlines Hawai'i and resulted in retrieving a large amount of trash from the coast. This was followed up with a clean-up of wooded debris by the City staff.

The Waikī Beach Special Improvement District Association (WBSIDA) would like to recognize the efforts the City staff provided in volunteering to clean up the debris on the beach in Waikī. The clean-up was lead by the Department of Facilities Maintenance but we also understand a number of City department heads participated in the clean-up efforts. This rapid response allowed the beach to get back to clean and safe condition in a short timeframe. Looking ahead, the WBSIDA is working on an effort to secure a local contractor to be on call for future beach clean-up needs as well as a regular scheduled mechanical beach cleaning, more to come on this front.

Get Your 2022 Permits for Loading Zone Use in Waikiki!



Forms may be submitted to a satellite City Hall or mailed to:
Department of Customer Services, Division of Motor Vehicles, Licensing and Permits
P.O. Box 30310
Honolulu, HI 96820-0310

Applicants must have:

- Verification of registered owner
- Current registration and vehicle information (license number, make, type,
- VIN number, address)
- A completed application form

The Waikiki Transportation Management Association (WTMA) is working with the City to provide better loading zone management. The Waikiki Transportation Management Association (WTMA) was established to coordinate and assist in the management of certain transportation operations within Waikiki under the purview of the WTMSID.

On any given day, at most times of the day, hundreds of freight and passenger vehicles are jockeying for limited curb space to conduct their business in Waikiki. Vehicles are double parked, parked in no parking zones, parked on the wrong side of the street, circling on streets (adding to congestion), and remaining in loading zones for hours to load and unload. In many cases, loading zones are occupied by those that do not have permits to be in the zones. This takes the space from those legally permitted to use loading zones. The WTMA is developing programs to provide coordination of space, enforcement of regulations, and implementation of technology.

The WTMA has been meeting with City departments to address concerns about the level of loading zone permit compliance.

Commercial vehicles are loading freight and passengers without proper City and Waikiki Special Improvement District (SID) permits. Many of the vehicles are often committing other violations. They are in violation of regulatory curb no parking signs and other parts of the City's Traffic Code.

**2021 Permits Shown;
2022 Permits Required**



Actions Being Taken To Enforce Applicable City Ordinances

Over the past several months the WTMA worked with the Honolulu Police Department, Customer Services Department and Budget and Fiscal Services to determine how best to use the revenue being generated by the Waikīkī SID permit fees. These funds are dedicated to the enforcement and management of the persons now parking vehicles inappropriately within Waikīkī. The Waikīkī SID permit has generated funds since its initiation on January 1, 2020.

The WTMA continues to monitor permit compliance and proper loading zone utilization. During 2020 the number of City permits issued was down by over 40% and there appeared to be a significant reduction in illegally parked vehicles. However, more vehicles are now parked in no parking zones at inappropriate times and for extended durations. Extensive data collection confirmed that only 6.5% of over 200 vehicles observed were fully compliant with applicable Revised Ordinances of Honolulu.

The Hawai'i Transportation Association (HTA) is getting the word out to their members. HTA included a message in their most recent newsletter for those members who will be doing business in Waikīkī next year... "Supplemental commercial vehicle permits are required to use a Waikīkī loading zone. The City (Department of Customer Services) is now issuing both City and Waikīkī Transportation Management Special Improvement District (SID) supplemental permits for next year. The 2022 permits will be required starting January 1."



Data collected at the end of 2021 showed that 77.9% of those vehicles performing either a freight or passenger loading activity within or near a loading zone did not have the required SID permit. The City has received complaints primarily about commercial vehicles parking in no parking zones. Consequently, the Honolulu Police Department will be conducting more enforcement starting early next year. One of the goals of this effort is to make loading zones more available for those entitled to use them.

The WTMA is identifying needed solutions to improve loading zone management including revisions and additions to existing City ordinances. The WTMA encourages all commercial freight and passenger vehicle operators doing business in Waikīkī to join the WTMA if they are not already a member to assist in identifying the needed loading zone management projects and programs.

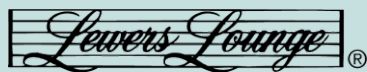




Welcoming 2022 from our “House Befitting Heaven” to yours!



As we await permits for full operation at House Without A Key, please join us in the evening for sunset cocktails, savory pupus, and live Hawaiian entertainment. Nightly 5:00 pm – 8:30 pm, entertainment starts at 5:30 pm.



Return to Lewers Lounge for contemporary live jazz in a chic setting. An array of classic spirits, rare whiskeys, refined wines by the glass and sophisticated mocktails accompanied by a selection of small plates to share will please the most discerning of guests. Featuring Tommy James, former director and composer of the Duke Ellington Orchestra. Thursday through Sunday evenings.



Halepuna
WAIKIKI
by Halekulani

Welcoming 2022 from our “House of Welcoming Waters” to yours.

As our nights are still a bit cooler, experience our *Tutu’s Spiked Hot Chocolate* and its special recipe, created by our very own Cocktail Sommelier, Ms. Tuda Grehan.
Enjoy!



WAIKIKI STAYCATION

Indulge in sophisticated simplicity at Halepuna Waikiki by Halekulani, where Kama’aina have access to the best that Waikiki has to offer:

- Rates start at \$260 + taxes daily with upgrade to Waikiki Mountain View at time of arrival (based on single/double occupancy) includes:
 - Guaranteed 4pm late checkout
 - Complimentary daily self-parking
 - Halepuna Access – Complimentary access to the Honolulu Museum & Bishop Museum
 - Complimentary WiFi
 - NO resort fees

Please call 808-445-9595 to reserve your room today!



TUTU’S SPIKED HOT * CHOCOLATE

Combine the following in a heat-safe glass:

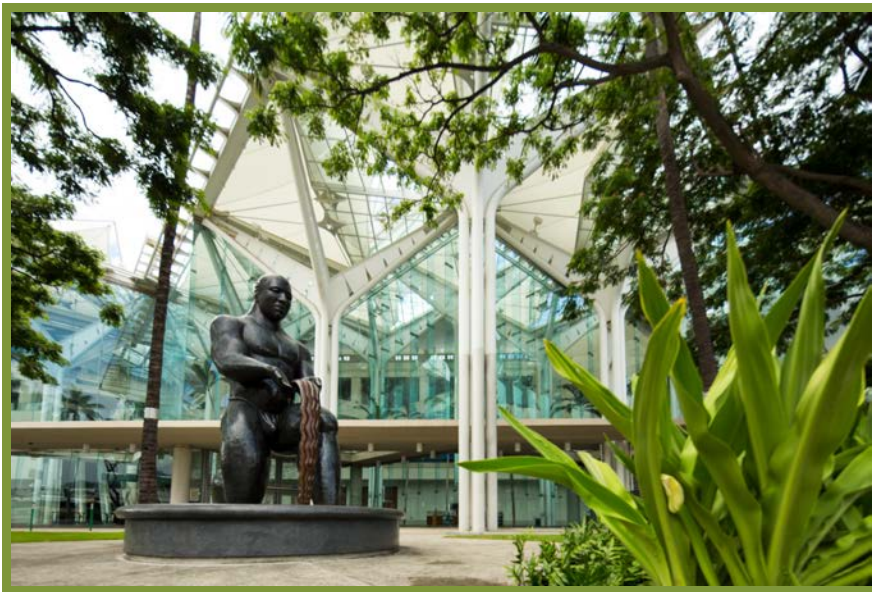
- 4 oz. Cayenne infused Ghirardelli hot chocolate (see below)
- 1 oz. Koloa Coffee Rum (or rum based coffee liqueur)
- 1 oz. Kuleana Nanea (aged rum)
- ¼ oz. Maple syrup

Top with Vanilla Coconut whipped cream (or whipped cream of your choice). Finally, dust the top with sweet cocoa and cayenne pepper powder to taste with a touch of salt.

Cayenne Infused Hot Chocolate: Make hot chocolate per instructions of your preferred brand of hot chocolate and add a touch of cayenne pepper powder to taste! **If desired, this beverage can be made cold. Just add ice before the whipped cream!*



Hawai'i Convention Center to Fully Reopen Exhibit Halls After Hosting Agencies Serving Our Community During the Pandemic



The Hawai'i Convention Center will fully reopen its Exhibit Halls for meetings and events in January 2022 after hosting multiple public sector agencies and programs during the COVID-19 pandemic.

Throughout the pandemic, the Center worked with state agencies to quickly provide temporary space that allowed for additional staffing and social distancing, while delivering important public services such as unemployment claims processing for the Hawai'i Department of Labor and Industrial Relations (DLIR), COVID-19

contact tracing for the Hawai'i Department of Health, vote counting for Hawai'i's Office of Elections, and Hawai'i Bar Exams for the Hawai'i State Judiciary.

Most recently, the Center's Exhibit Hall 1 served as a location for DLIR, DOH, and the Hawai'i Housing Finance & Development Corporation (HHFDC)/Catholic Charities operation providing rental and housing assistance to local families. The DOH will move to a smaller space at the Center through spring 2022, while all other agencies will be returning to their original offices.

"The Hawai'i Convention Center was pleased to serve our community by offering space so these agencies could provide important services in a safe and socially distanced manner," said Teri Orton, general manager of the Hawai'i Convention Center, managed by ASM Global. "As the COVID-19 pandemic has progressed, the needs for these spaces have changed, and we will be welcoming meetings and events back to our Exhibit Halls."

The health and safety of guests and employees is the Center's top priority, and it continues to follow guidelines set by the State of Hawai'i and the City & County of Honolulu. The Center has developed and implemented health and safety measures led by ASM Global's comprehensive VenueShield program.



**HYATT REGENCY WAIKIKI
BEACH RESORT & SPA**

ARTISANAL FOODS & CRAFTS

EVERY MONDAY & WEDNESDAY, 4PM–8PM
GROUND FLOOR, HYATT REGENCY WAIKIKI ATRIUM

WEEKLY LIVE MUSIC AT SHOR

Enjoy live entertainment from local artists
every Thursday, Friday and Saturday
evenings, 5:30 PM – 8:30 PM.

SHOR



3rd Floor, Diamond Head Tower

BREAKFAST 6 AM-11 AM
LUNCH 12 PM-3 PM | DINNER 5 PM-9 PM
HAPPY HOUR 3 PM-5 PM



**HYATT
REGENCY®**

WAIKIKI BEACH
RESORT & SPA

  @hyattregencywaikikibeach



menus



OpenTable®

Buon Anno a tutti!

Christopher Lord, General Manager

IL LUPINO

TRATTORIA & WINE BAR

BUON ANNO A TUTTI...Happy New Year from all of us at Il Lupino!!! Thank you for your continued patronage. We hope to see you this year for our award-winning food and wine list. From a delightful breakfast to an authentic Italian lunch and dinner featuring fresh, local produce, the highest quality imported ingredients, fresh pasta made in-house daily, and exquisite desserts, Il Lupino offers our guests the finest dining experience in Waikiki! We look forward to serving you throughout 2022 & beyond! Grazie Mille!

Indoor/Outdoor Dining
Take-out • Delivery
Open Daily 9:00am-10:00pm
Happy Hour 12:00-6:30pm

Royal Hawaiian Center
Bldg B, Level 1
Validated Parking

808.922.3400
illupino.com



Waikiki Beach Walk Open Market Returns on Mondays



Waikiki Beach Walk, the vibrant shopping, dining and entertainment district at Lewers Street and Kalakaua Avenue, has announced the return of Waikiki Beach Walk Open Market on Mondays from 4 to 8 p.m. It's a great way to support local businesses, while discovering truly one-of-a-kind souvenirs, handmade art, and snacks to take home for yourself or as a gift to someone special. Among the local vendors returning to Waikiki Beach Walk Open Market:

- **Oahu Tiki** showcases sculptures with significant meanings that represent important values, such as family and perseverance. Check out their intense emotional expressions or select from wooden carvings of notable Hawaiian cultural symbols, like the Hawaiian fishhook and the sea turtle.
- **Mo'o Hawaii** offers colorful mini surfboards that can be personalized with names and other designs.
- **Hilo Soap Company** specializes in vegan bath and body products that are hand-crafted in small batches on Hawaii Island.

In addition to craft and gift vendors, Waikiki Beach Walk Open Market will offer prepared foods, cut fruit and smoothies, making this an ideal and festive pau hana activity.

Waikiki Beach Walk will continue to host an amazing array of music and cultural programming during 2022. Every Tuesday, it's "**Kū Ha'aheo**," live Hawaiian entertainment from 4:30 to 6 p.m. The weekly series at the Plaza Stage is set for **January 4, 11, 18 and 25**.

"**Mele Hali'a**," the monthly showcase featuring the finest in Hawaiian musical performances, is **Sunday, January 16** with multitalented vocalist and bass virtuoso **Nathan Aweau** from 5 to 6 p.m. Each month, Mele Halia hosts stand-out performances by award-winning, multitalented musicians.

Waikiki's popular "**Ka Lei Hula**" (**January 2, 9, 16, 23 and 30**) offers complimentary hula practice each Sunday morning at 9 a.m. The **Royal Room/Hawaiian Music Hall of Fame** at Waikiki Beach Walk is the place to go for Hawaiian music history and other cultural programming, with live streams on the **21st of each month** as part of the "Make Music Hawaii" series.

Offering **3 free hours of validated parking** with a \$10 minimum purchase, Waikiki Beach Walk's collection of unique locally owned businesses includes Blue Ginger, Big Wave Dave Surf & Coffee, SoHa Living, Coco Mango, Mahina, Keep It Simple, KaiAloha Supply, The Ukulele Store and Hele Mai Salon, among others. For details and the latest news, including shops, services, entertainment, dining and event listings, visit www.waikikibeachwalk.com or Facebook/Instagram @waikikibeachwalk



**TAKE-OUT
AVAILABLE NOW!**

International Market Place 3rd Floor
Open Daily 7 AM - 10 PM
(808) 922 - 2488 | www.lilihabakery.com



10% OFF
Kama āina Discount
with valid Hawai i

ROYAL HAWAIIAN CENTER ROARS INTO THE NEW YEAR!



Lunar New Year descends upon Royal Hawaiian Center with cultural activities, live entertainment, special gifts with purchase, and lots of good luck! Year of the Tiger festivities kick-off on Sunday, January 30, 2022, at The Royal Grove and continue through early February, delighting guests with this annual cultural celebration.



Chinese Calligraphy

While many people associate Lunar New Year with Chinese culture, it's a tradition with roots throughout Asia, celebrated by communities in Thailand, Singapore, Indonesia, and the Philippines. The festival originated as a means of honoring one's ancestors and involved a variety of cultural activities meant to usher in luck and good fortune in the year ahead. Today, Lunar New Year is a fantastic time for the people of Hawai'i to gather and enjoy delicious food, fun activities, special good luck charms and more.

At Royal Hawaiian Center, the celebration reaches an exciting peak on Tuesday, February 1, Lunar New Year Day with an exhilarating lion dance performance by the **Lung Kong Physical Culture Club** at 5 p.m. The lions will weave their way through The Royal Grove, then dance through the Center and make stops at participating Royal Hawaiian Center stores and restaurants.



Lung Kong Physical Culture Club

We're also very excited to announce our limited-time Gift with Purchase promotion from January 24 through February 13. Shoppers who redeem \$300 or more in Royal Hawaiian Center receipts can pick up a **lucky lisee red envelope** at Helumoa Hale Guest Services. Each lisee envelope will contain a lucky number that corresponds to a prize. Festive holiday prizes include merchandise from participating merchants, specialty logo items, and Royal Hawaiian Center gift cards ranging in value from \$28 to \$168.



Lai See Envelopes

Don't miss your chance to celebrate the Year of the Tiger in the heart of Waikīkī! For a full list of Lunar New Year activities and promotions, visit our website at www.royalhawaiiancenter.com

ROYAL HAWAIIAN CENTER ROARS INTO THE NEW YEAR!



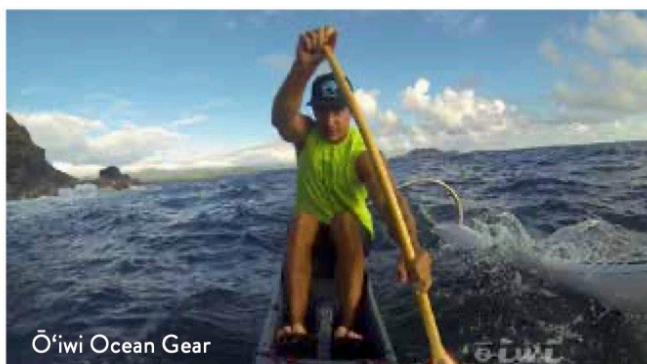
NEW YEAR, NEW YOU IN 2022

The start of the year is the perfect time to **make a fresh start to set goals and create change**. Whether your New Year's resolution is to be healthier, reduce your carbon footprint, or be more adventurous, Royal Hawaiian Center is here to help!



BE HEALTHIER

You don't have to sacrifice sweet treats to be healthy! Enjoy vegan "ice cream" made from frozen bananas topped with fresh island fruit at **Banán** (Building C, Level 1) or visit **Hawaiian Cane Juice** (Building B, Level 1) for an all-natural sugar cane juice or smoothie. If you're in a savory mood, try **Noi Thai Cuisine** (Building C, Level 1) or **Pho Factory** (Pā'ina Lānai, Building B, Level 2), that both use fresh ingredients and have dishes you can easily make vegetarian.

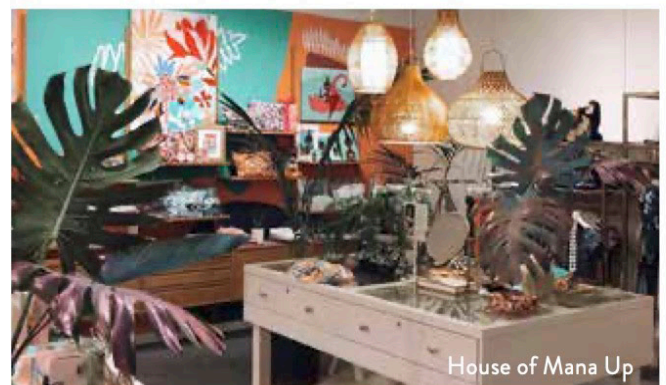


Fitness and fashion are forefront at **Ō'iwi Ocean Gear** (Building A, Level 1). With attractive, high quality, and functional activewear for ocean sport enthusiasts, you'll be hitting the waves with designs that capture the unique lifestyle and culture of the Hawaiian islands.

SHOP SUSTAINABLY

In 2022, aim to shop more sustainably by supporting local businesses and second-hand shops. Royal Hawaiian Center is home to a number of locally-owned businesses speciality in made in Hawai'i products, including **House of Mana Up!** (Building A, Level 1), **Royal Hawaiian Quilt** (Building A, Level 2), **Simply Wood** (Building C, Level 1) and **Honolulu Cookie Company** (Building B, Level 1). Keep these stores in mind when shopping for clothes, snacks, and gifts. Buying from businesses like these positively impacts our economy and helps to support local families.

Second-hand shopping is a great way to find unique pieces while staying sustainable. **Harbors Vintage** (Building C, Level 1) offers customers an array of clothing and accessories from the '80s, '90s and early 2000s.



STEP OUT OF YOUR COMFORT ZONE

Looking for new ways be more adventurous? From new foods to activities, Royal Hawaiian Center has a variety of ways to help you broaden your horizons. If you find yourself eating at the same restaurant every time you come to the Center, try a different one. There's plenty to choose from! Have you ever taken a **hula, ukulele, lei making or lauhala weaving lesson**? If not, the new year is a great time to try something new! Our cultural classes at The Royal Grove and Helumoa Hale will introduce you to activities commonly practiced in the Hawaiian culture. They may even introduce you to a new hobby! For more information, visit royalhawaiiancenter.com.

JANUARY COMPLIMENTARY CULTURAL PROGRAMMING

LĀ PULE SUNDAY	PŌ 'AKAHI MONDAY	PŌ 'ALUA TUESDAY	PŌ 'AKOLU WEDNESDAY	PŌ 'AHĀ THURSDAY	PŌ 'ALIMA FRIDAY	PŌ 'AONO SATURDAY
HELUMOA HALE Visit or call 808.922.2299 for the most updated information about our cultural lessons and special events, to receive a one-of-a-kind gift with an eligible purchase, or relax in our Heritage Room and learn about the rich history of Helumoa. He mai!						1
2	3	11 AM – 12 PM Hula Lesson, G1 5:30 – 6:30 PM Kawika Trask Trio, G1	11 AM – 12 PM Lauhala Lesson, A2 5:30 – 6:30 PM Pu'uhonua, G1	12 PM - 1 PM Keiki Hula Lesson , G1 5:30 – 6:30 PM Hula & Music Performance, G1	12 PM - 1 PM Lei Making Lesson, A2 5:30 – 6:30 PM Malu Productions, G1	11 AM – 12 PM Keiki Hula, G1 5:30 – 6:30 PM Hula Kahiko, G1
9	10	11 AM – 12 PM Hula Lesson, G1 5:30 – 6:30 PM Kawika Trask Trio, G1	11 AM – 12 PM Lauhala Lesson, A2 5:30 – 6:30 PM Pu'uhonua, G1	12 PM - 1 PM Keiki Hula Lesson , G1 5:30 – 6:30 PM Hula & Music Performance, G1	12 PM - 1 PM Lei Making Lesson, A2 5:30 – 6:30 PM Malu Productions, G1	11 AM – 12 PM Keiki Hula, G1 5:30 – 6:30 PM Hula Kahiko, G1
16	17	11 AM – 12 PM Hula Lesson, G1 5:30 – 6:30 PM Kawika Trask Trio, G1	11 AM – 12 PM Lauhala Lesson, A2 5:30 – 6:30 PM Pu'uhonua, G1	12 PM - 1 PM Keiki Hula Lesson , G1 5:30 – 6:30 PM Hula & Music Performance, G1	12 PM - 1 PM Lei Making Lesson, A2 5:30 – 6:30 PM Malu Productions, G1	11 AM – 12 PM Keiki Hula, G1 5:30 – 6:30 PM Hula Kahiko, G1
23	24	11 AM – 12 PM Hula Lesson, G1 5:30 – 6:30 PM Kawika Trask Trio, G1	11 AM – 12 PM Lauhala Lesson, A2 5:30 – 6:30 PM Pu'uhonua, G1	12 PM - 1 PM Keiki Hula Lesson , G1 5:30 – 6:30 PM Hula & Music Performance, G1	12 PM - 1 PM Lei Making Lesson, A2 5:30 – 6:30 PM Malu Productions, G1	11 AM – 12 PM Keiki Hula, G1 5:30 – 6:30 PM Hula Kahiko, G1
30	31					LOCAL INFORMATION A2: Bldg. A, 2nd Floor G1: The Grove Stage HH: Helumoa Hale For more information, call Helumoa Hale Guest Services, 808.922.2299

The Royal Grove is an open air venue subject to inclement weather. All activities, events and performances are subject to change without notice. Contact Helumoa Hale Guest Services at 808.922.2299 for the latest information. Standard parking rates apply.

- ★ Dine-In
- ★ Take-Out
- ★ Delivery
- ★ Online Ordering
- ★ Catering
- ★ Parties/Events



- ★ Great Food
- ★ Full Bar
- ★ TV Sports
- ★ Indoor/Outdoor Seating
- ★ Friendly Service

2 DAILY HAPPY HOURS

2PM *til* 5PM

- 1/2 OFF ALL APPETIZERS
- \$4 PBR DRAFT
- \$5 PINEAPPLE EXPRESS
- \$5 FROZEN MARGARITAS
- \$5 TITO'S COCKTAILS



9PM *to* CLOSE

- \$4 PBR DRAFT
- \$5 FIREBALLS
- \$6 JAMESON'S OR JACK
- \$6 TITO'S COCKTAILS
- \$10 TEXAS TEAS
- PLUS OUR LATE NIGHT FOOD MENU**

DONT FORGET ABOUT

Taco TUESDAYS



NOW OPEN IN WAIKIKI!

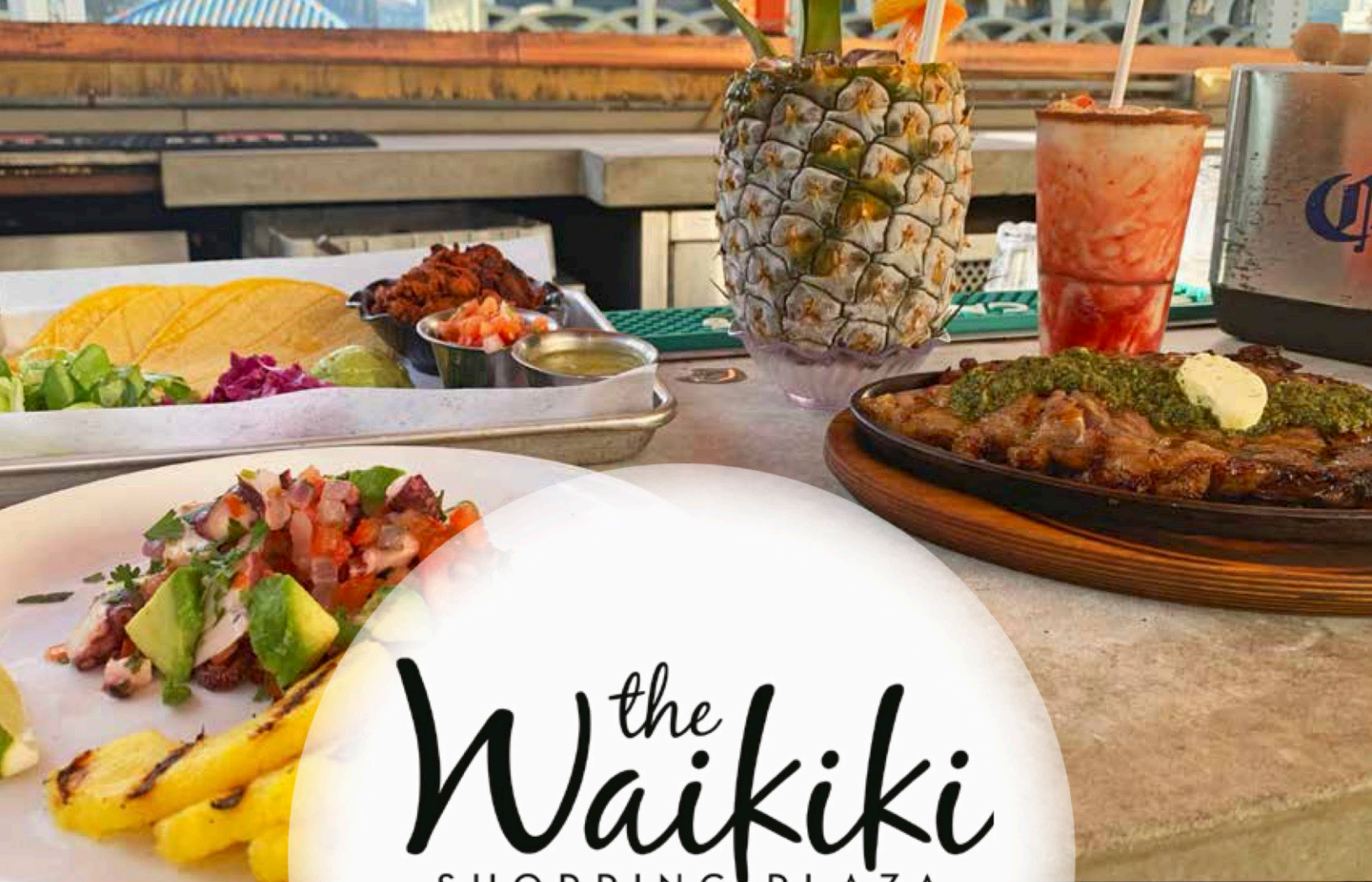
@ THE LAYLOW

2299 KUHIO AVENUE

Sun-Thu 4-11pm

Fri & Sat 2pm-Midnight

- **WED - OPEN MIC NIGHT**
- **FRI - THE COMEDY PIT**
- **LIVE MUSIC (ck online)**



the
Waikiki
SHOPPING PLAZA
DINING



2250 Kalakaua Ave, Honolulu, HI 96815
waikikishoppingplaza.com/dining



Búho Cocina y Cantina

Roomy, modern rooftop restaurant & open-air bar featuring locally sourced Mexican eats & cocktails.

Royal Lobster

Simply Butter'd Fresh Maine Lobster Rolls & Salads perfect to take out or dine in!



Sky Waikiki

Wrap-around rooftop deck in the heart of Waikiki serving elevated seafood & cocktails.

Starbucks

Conveniently-located on the first floor serving all your food & drinks.



Tanaka of Tokyo

Hawai'i's finest steak and seafood skillfully prepared by master teppanyaki chefs.

W O L F G A N G ' S
S T E A K H O U S E

BY WOLFGANG ZWIENER

*Mahalo Nui Loa
&
Hau'oli Makahiki Hou!*

2022
HAPPY NEW YEAR



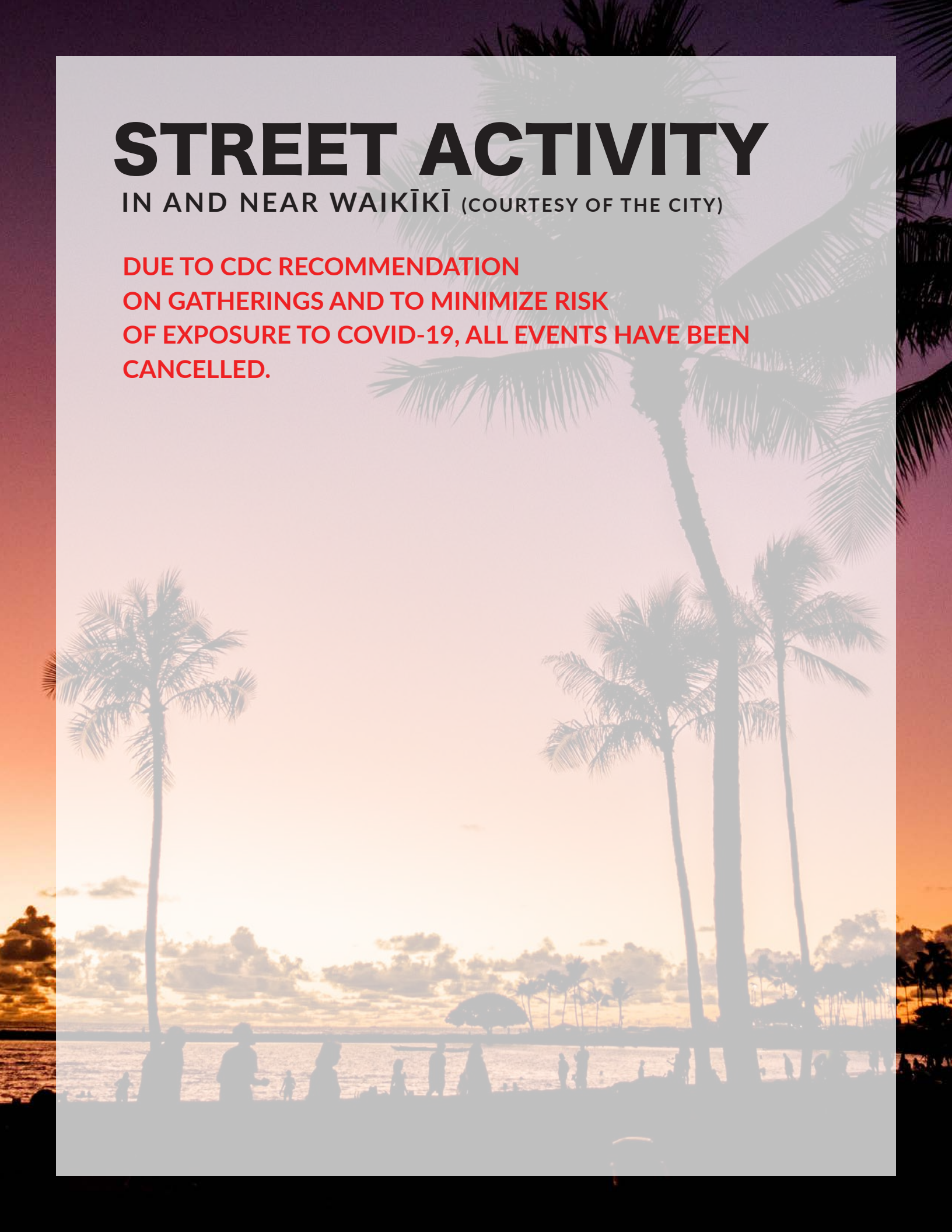
WOLFGANG'S STEAKHOUSE BY WOLFGANG ZWIENER

Sun - Thur 11am - 11pm • Fri & Sat 11am-11:30pm • Happy Hour Mon - Fri 3-6pm
Royal Hawaiian Center • Bldg C, Level 3 • wolfgangsteakhouse.net • [@wolfgangswaikiki](https://www.instagram.com/wolfgangswaikiki)
808.922.3600 • [opentable.com](https://www.opentable.com)

STREET ACTIVITY

IN AND NEAR WAIKĪKĪ (COURTESY OF THE CITY)

**DUE TO CDC RECOMMENDATION
ON GATHERINGS AND TO MINIMIZE RISK
OF EXPOSURE TO COVID-19, ALL EVENTS HAVE BEEN
CANCELLED.**





WAIKĪKĪ IMPROVEMENT ASSOCIATION

Wikiwiki Wire is published on the first Monday of each month. If you would like to share your news with other members, please send your info to: editor@waikikiimprovement.com.

Submission Deadline

Waikīkī-related news and information submitted by members (or their PR agencies) for the Wikiwiki Wire newsletter should be received no later than **5 PM MONDAY, ONE WEEK PRIOR** to the newsletter's publication and distribution on the first Monday of each month.

News & Stories: Please submit any Waikīkī-related stories/articles as a Word doc and include photos to accompany stories/ articles. For best results, please upload photos as a separate JPEG attachment - maximum 2 MB each image.

Flyers/PDFs: Waikīkī-related flyers are welcome but must look like advertising flyers and not press releases. Please format flyers to an 8.5" x 11" size and submit them in a PDF format.

Press Releases: Please submit Waikīkī-related press releases as a Word doc. Press Releases that do not fit within one page of the Wikiwiki Wire newsletter will be returned for editing.

Photos: For best results, please upload photos as a separate JPEG attachment - maximum 2 MB each image.



WAIKĪKĪ IMPROVEMENT ASSOCIATION

We are a cross-section of business, government and the community; our members care about the future of this special place - Waikīkī.

For more than 40 years, the Waikiki Improvement Association has remained true to its objective: to improve, enrich and beautify Waikīkī for the benefit of residents and visitors alike and to promote conditions conducive to the economic and cultural good and for the betterment of the entire community.

HAWAIIAN DIACRITICAL MARKS

Waikīkī Improvement Association recognizes the use of diacritical marks (i.e., glottal stop (ʻ), macron (ā) in place names of Hawaiʻi, such as Waikīkī and Kalākaua Avenue and will include them whenever possible. We also respect the individual use (or not) of these markings for names of organizations and businesses.

There will also be times when we may not have a chance to add or change the markings in all of the articles submitted and when that happens, e kala mai.